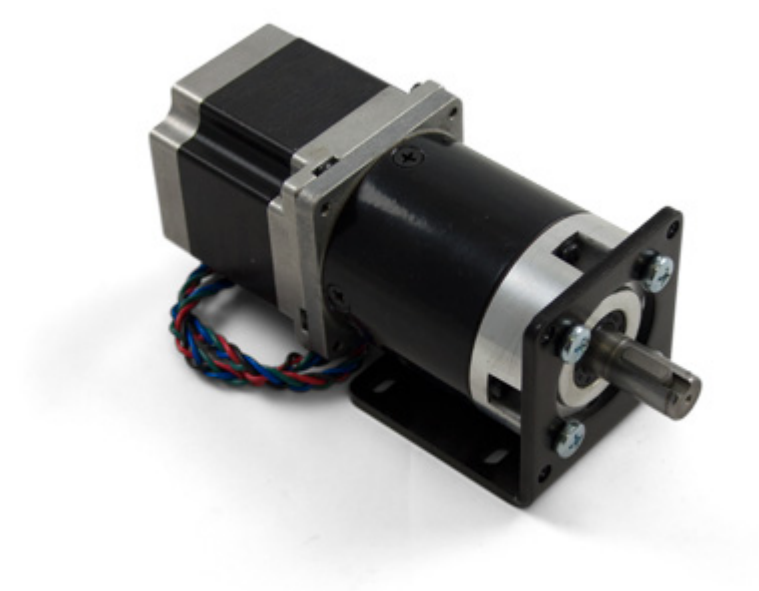


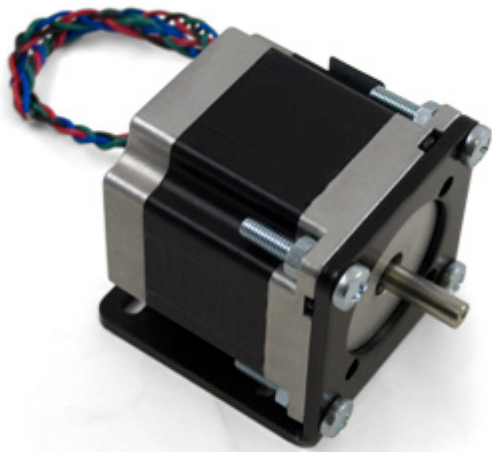
Stepper Mounting Bracket (NEMA 23)



This coated steel mounting bracket provides a simple means of attaching a NEMA-23 sized motor to a flat surface. It has two sets of mounting holes, so it can be attached to 56mm planetary gearboxes or mounted directly to the motor. For a list of compatible motors, see the “Compatible Products” tab.

Note: Nuts and screws not included.





Product Specifications

Physical Properties

Mounting Plate Size NEMA – 23

Material Mild Steel (Coated)

Documents

- [Mechanical Drawings](#)
- [Download 3D Step File](#)

Stepper Motors

This mounting bracket can fit on any motor or gearbox that uses the NEMA-23 mounting pattern. Here's a list of stepper motors it fits on:

Product		Physical Properties			Motor Properties			Electrical Properties
Part Number	Mounting Plate Size	Shaft Diameter	Weight	Step Angle	Rated Torque	Maximum Speed (w/1067 Motor Controller)	Recommended Voltage	
3330_0	NEMA – 23	1 ₄ "	695 g	0.9°	11.2 kg·cm	2250 RPM	12 V DC	
3331_0	NEMA – 23	1 ₄ "	686 g	1.8°	11 kg·cm	3000 RPM	12 V DC	
3332_0	NEMA – 23	12 mm	1.2 kg	0.42°	46.6 kg·cm	375 RPM	12 V DC	
3333_0	NEMA – 23	12 mm	1.3 kg	0.12°	150 kg·cm	116 RPM	12 V DC	
3334_0	NEMA – 23	12 mm	1.5 kg	0.023°	240 kg·cm	25 RPM	12 V DC	