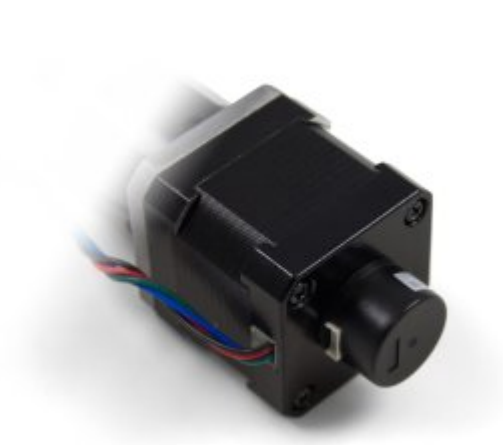


Optical Rotary Encoder HKT22

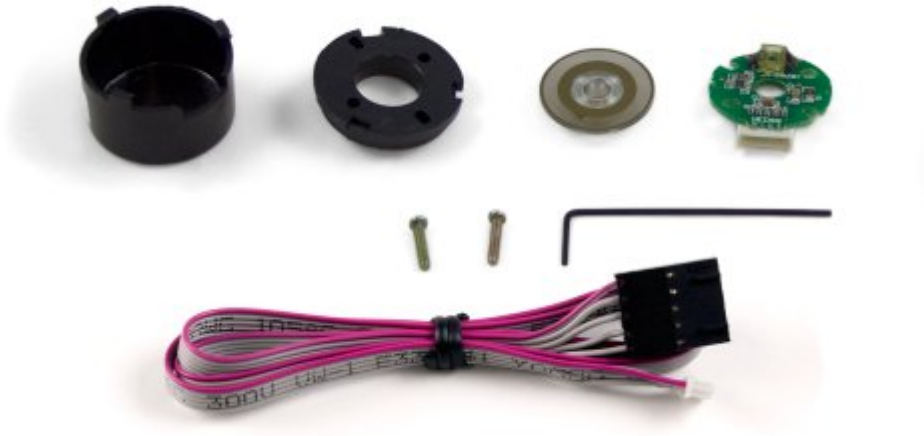


This compact, economical optical quadrature encoder can be attached to the 4mm rear shaft of a motor. It has 300 counts (full quadrature cycles) per rotation and can be installed by fitting it over the shaft, mounting it to the back of the motor, and tightening the set-screw. For complete assembly instructions, take a look at the user guide. This encoder does not support the use of an index channel.



The mounting holes on the HKT22 encoder line up with the holes on the back of any rear-shaft stepper motor sold at Phidgets, Inc. For a list of compatible motors and encoder interfaces, see the Compatible Products tab.

Comes Packaged With



- 0.9 mm Hex Key for set-screws
- Plastic encoder cap and mount
- Encoder disk
- Encoder PCB
- Two screws
- 3035 – Cable for HKT22 Encoder

Product Specifications

Encoder Properties

Controlled By	Encoder Interface
Output Circuit Type	Push-Pull (Single-Ended)
Encoder Speed Max	6000 RPM
Encoder Resolution	300 CPR

Electrical Properties

Supply Voltage Min	5 V DC
Supply Voltage Max	5 V DC
Output Frequency Max	30 kHz

Physical Properties

Inner Diameter	4 mm
Operating Humidity Min	30 %RH
Operating Humidity Max	(Non-condensing) 85 %RH
Operating Temperature Min	-10 °C
Operating Temperature Max	85 °C
IP Rating	IP40
Weight	4 g