

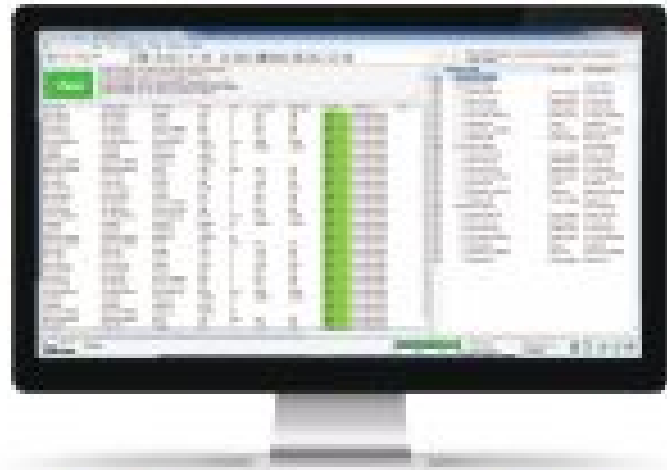
Base License





Simple, powerful and affordable test manager for LabVIEW

TVI is an easy-to-use test management software aimed to simplify and shorten functional tester development time and effort. It allows creating and editing tests and test sequences, managing software and hardware parameters, automatically save test data and generate reports.



Ease of Use

Easy-to-use approach and intuitive interface simplify your access to all main functionality and save the precious development time and resources during and after.



Seamless integration with LabVIEW

Effortless access your LabVIEW applications and other underlying software and hardware devices.



Generate Reports

Easy access and the number test execution and the parameters. Create real-time reports, add the image tests, test screenshots, run screenshots, results.



The infographic is set against a background of colorful, overlapping shapes in shades of red, orange, yellow, green, blue, and purple. It features six key features, each with an icon and a brief description:

- Real-time monitoring:** Select, store and edit full or wide resolution of video feeds in real-time. Instantly search and playback your feeds and make time-lapse images to record events.
- Large resource library:** Thousands of compressed images, photos, videos, events and IoT feeds for easy identification and forensic analysis.
- Multi-product and configuration support:** Offer one package for all products, all software and hardware platforms. So users can find all features configured in a minute.
- Reports Viewer:** Allocated based on user rights to view, edit and share all the records in the database. Send them as PDF. Customize the reports and export data to excel or CSV, PDF or HTML.
- Dynamically load tests:** Test the feeds dynamically during complete installation. Record the test results and the test management framework, user test to independent during any development change and integration.
- User management and permission levels:** Offer production level of users. Offer 3 permission levels: user, manager and admin. Managing user's access and adding operations user for better and efficient production level of operations.

Below the features are four pricing tiers:

Business / \$4000	Basic / \$3000	Full / \$2500	Pro / \$1800
Full database access Unlimited Cloud and mobile support	Full database access Unlimited No cloud and mobile support	Full database access Unlimited No cloud and mobile support No API access	Full database access Unlimited No cloud and mobile support No API access No mobile app

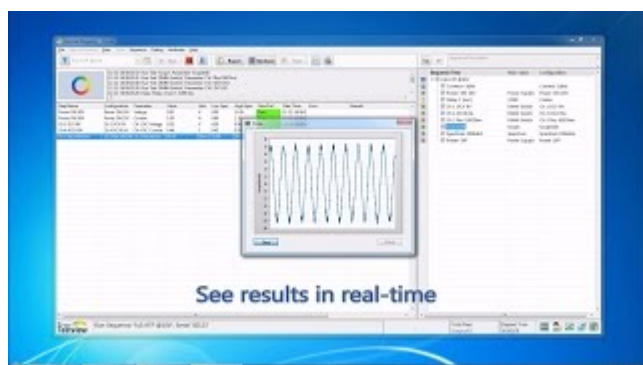
At the bottom right is a screenshot of the software's interface showing a list of feeds and their status.

Contact Us: info@tvi.com | 5th Floor, 3rd St., Migdal HaEmek, Haifa 31094000 | T: +972 77 242 7300 | M: +972 54 527 6524 | www.tvi.com

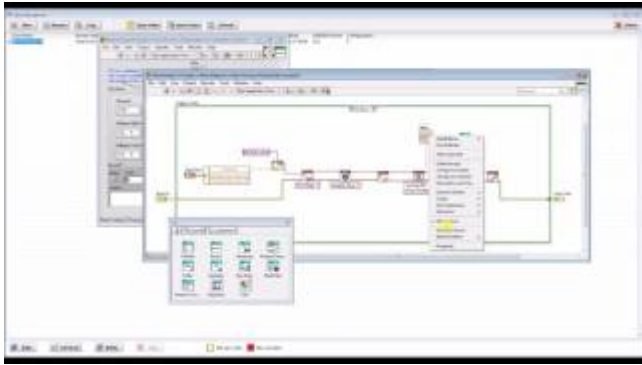
Our partners:

© 2018 Tivi.com. All rights reserved. | www.tivi.com

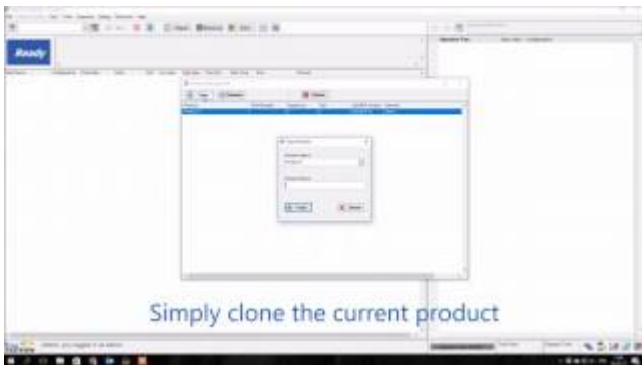
Video Guides



TVI Intro



Creating New Test



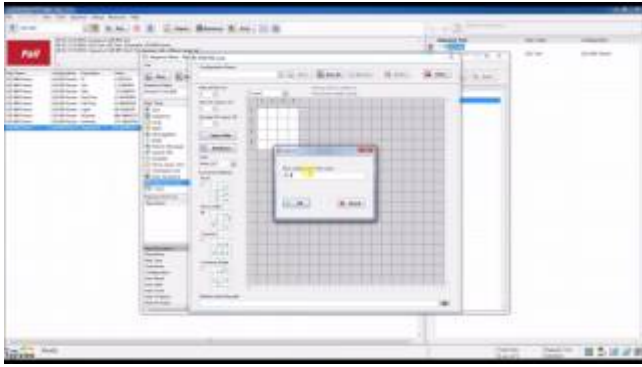
Creating New Product



Creating Test Sequence



Editing Test Parameters



Multi Unit Under Test



Report Analysis