

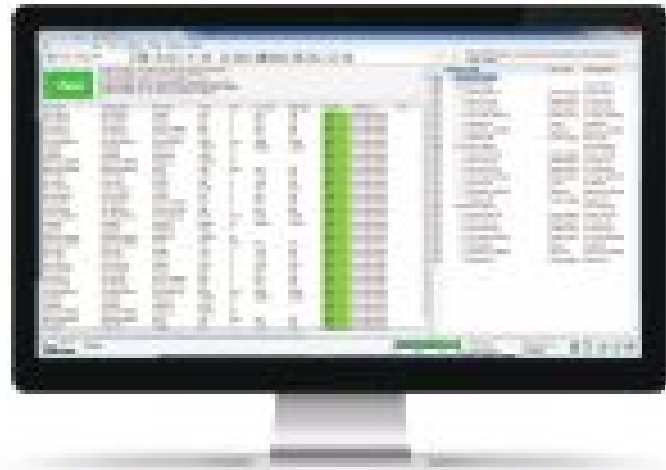
# Runner License





### Simple, powerful and affordable test manager for LabVIEW

TVI is an easy-to-use test management software aimed to simplify and shorten functional tester development time and effort. It allows creating and editing tests and test sequences, managing software and hardware parameters, automatically save test data and generate reports.



#### Ease of Use

Easy-to-use approach and intuitive interface simplify your access to all main functionality and save the programmer's time to make a suitable sequence during and after.



#### Seamless integration with LabVIEW

Effortless access your LabVIEW applications and other programming languages and modules process.



#### Flexible Tests

Easy create and edit number test sequences and test parameters. Create multi-test sequences, add and manage tests, tests configurations, run individual test sequence.



**Test scenarios**  
Select, copy and edit full or partial scenarios or create custom test and test scenarios. Easily build and update your tests with reuse functionality to speed results.

**Large resource library**  
Thousands of comprehensive test scripts, complete usage guides and API features to help developers in various markets.

**Multi-product and configuration support**  
Define and manage all of products, test software and hardware parameters for each product. Multiple configurations supported.

**Reports Viewer**  
Integrated report viewer displays test data and the API for records in the database. Test Run in SQL Database and reports generated into reports for Word, PDF or HTML.

**Dynamically load tests**  
Test set loaded dynamically allowing complete flexibility to load the test code and the test management framework, even test to independent testing and development during test program.

**User management and permission levels**  
Full production test or demo, TV offers 3 permission levels. Query program and using existing valid users and additional operators user for tests and submit production level test scenarios.

Business / \$1000	Basic / \$1500	Full / \$2500	Pro / \$3500
1 TVI License (remote) 10000 Cloud and remote updates	1 TVI License (remote) 10000 Remote and remote updates	1 TVI License (remote) 10000 Remote and remote updates Comprehensive API access API access	1 TVI License (remote) 10000 Remote and remote updates Comprehensive API access API access API access

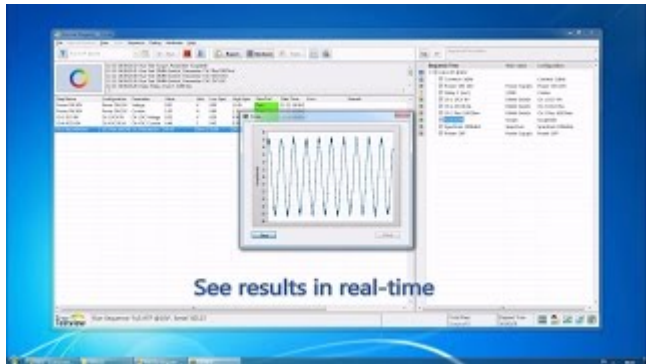
1. All software licenses are perpetual and available for 24 months.  
2. License maintenance and support services available for 12 months.

Contact Us: [info@tvi.com](mailto:info@tvi.com) | 5 Hammersley St, Mordialloc VIC, 3207 Australia | T: +61 3 77 245 7300 | M: +61 3 94 527 624 | [www.tvi.com.au](http://www.tvi.com.au)

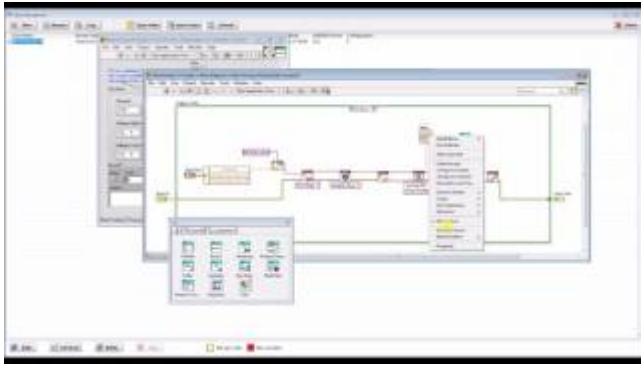
Our partners:

© 2015 Tvi.com.au | All rights reserved | [www.tvi.com.au](http://www.tvi.com.au)

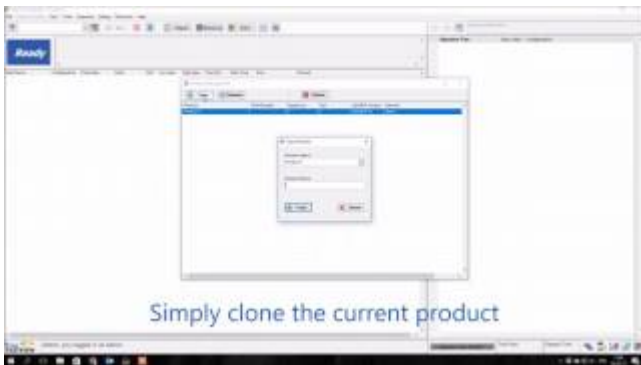
## Video Guides



## TVI Intro



Creating New Test



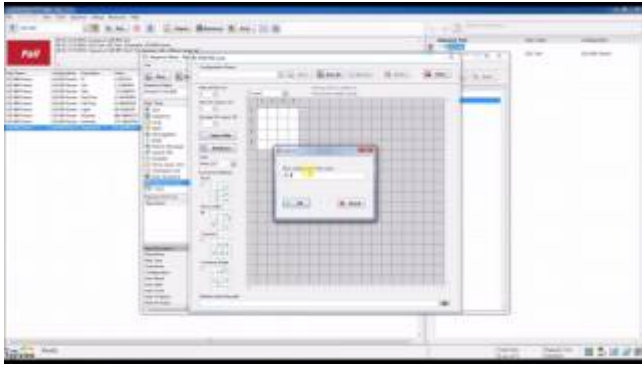
Creating New Product



Creating Test Sequence



Editing Test Parameters



Multi Unit Under Test



Report Analysis