

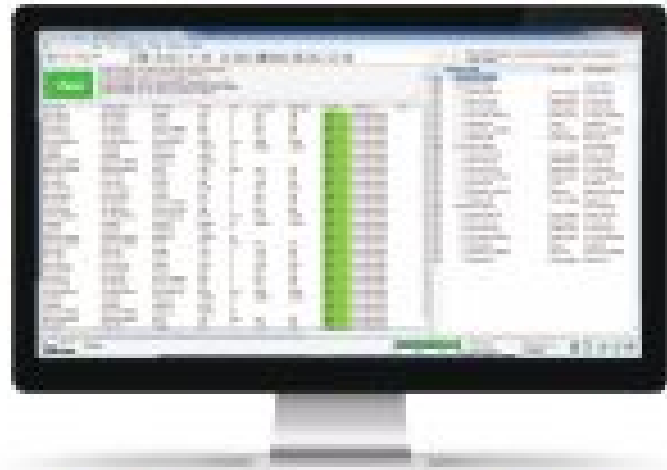
Runner License





Simple, powerful and affordable test manager for LabVIEW

TVI is an easy-to-use test management software aimed to simplify and shorten functional tester development time and effort. It allows creating and editing tests and test sequences, managing software and hardware parameters, automatically save test data and generate reports.



Ease of Use

Easy-to-use approach and intuitive interface allow you control it as easily. Easy-to-use tool for the programmer, you'll make it possible to create, change and reuse.



Seamless integration with LabVIEW

Effortless works you build in LabVIEW" while taking test after introducing software into production process.



Generate Reports

Easy to use and the monitor test execution and the parameters. Create real-time reports, add the image tests, test screenshots, run screenshots for reports.



Test scenarios
Select, clone and edit full or partial scenarios or create custom test and test scenarios. Flexibly build and manage your tests and reuse functionality in other tests.

Large resource library
Thousands of comprehensive test scripts, creating single projects and API tests for easy development or framework updates.

Multi-product and configuration support
Define and manage all of products, test software and hardware parameters for each product. Multiple configurations supported.

Reports viewer
Integrated report viewer displays test runs, test and the API test records in the software test run as JSON. Customize the reports appearance and export the HTML PDF or HTML.

Dynamically load tests
Test API codes dynamically allowing complete flexibility to build the test code and the test management framework, even test in independent testing environments during development.

User management and permission levels
API production test or test TV offers 3 permission levels: user, engineer and admin. Creating roles, users and defining operations user the roles and admin permissions is a test framework.

Starter / \$400	Basic / \$800	Full / \$1800	Pro / \$3000
1 API Scenario creation 100 tests	10 API Scenario creation 1000 tests	100 API Scenario creation 10000 tests	1000 API Scenario creation 100000 tests
Cloud and mobile support	Personal and professional use	Business and professional use Comprehensive API support Comprehensive HTML reports	Business and professional use Comprehensive API support Comprehensive HTML reports Advanced test code

1. All API scenarios are supported on Windows or Linux OS.
2. License activation is valid for 1 year or until the license expires.

Contact Us: sales@tvi.com | www.tvi.com | 5th Floor, 12th St., Migdal Haemek, Israel 2200499 | T: +972 77 242 7377 | M: +972 54 527 624 | www.tvi.com

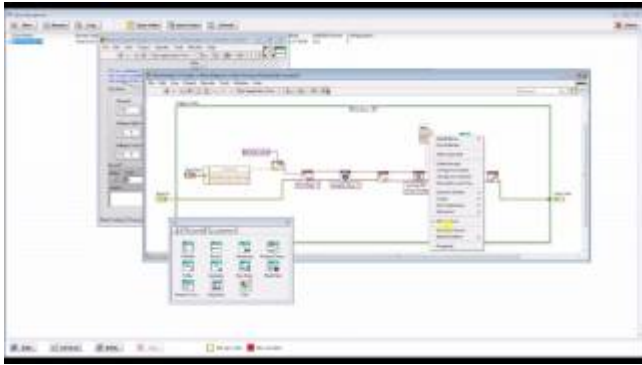
Our partners:

© 2015 Tvi.com. All rights reserved. | www.tvi.com

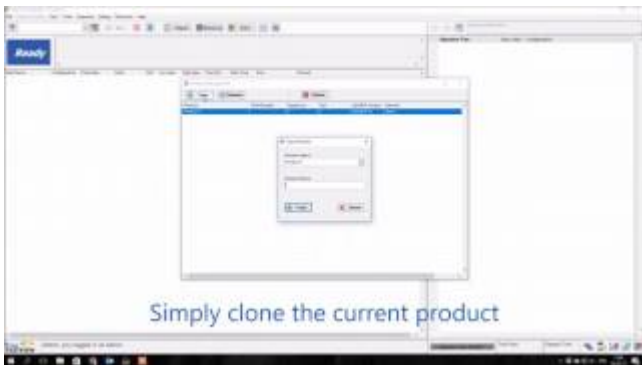
Video Guides



TVI Intro



Creating New Test



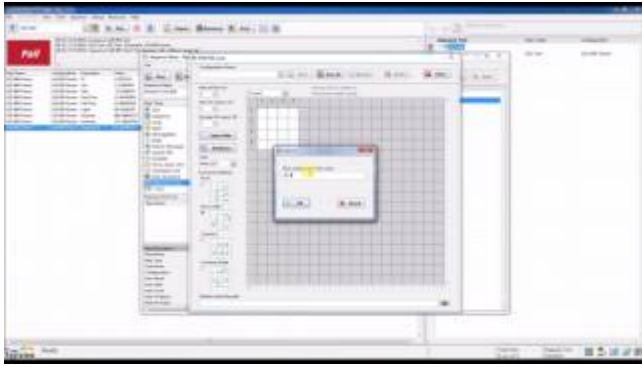
Creating New Product



Creating Test Sequence



Editing Test Parameters



Multi Unit Under Test



Report Analysis